



## Who We Are

Lutheran Community Services Northwest (LCSNW) makes our community safer and healthier. We help youth and families navigate life's toughest challenges through the transforming power of hope.

With more than 100 dedicated staff across our Tri-Cities offices, we provide compassionate, evidence-based care to Medicaid-eligible youth (ages 3-21) and families in Benton and Franklin Counties.

Our approach is strengths-based and family-centered, ensuring youth remain safe, supported, and loved in their homes and communities.



## Get connected.

[www.lcsnw.org/tri-cities](http://www.lcsnw.org/tri-cities)

*LCS Northwest services are provided without regard to race, ethnicity, national origin, religious belief, gender, gender identity or expression, sexual orientation, age, marital status, ability, military or veteran status, source of income or political affiliation.*

HEALTH. JUSTICE.

# HOPE

Lutheran Community Services Northwest

PH: 509-735-6446 • FX: 509-735-6449  
TCReferrals@lcsnw.org

### KENNEWICK OFFICE:

3321 W Kennewick Ave, Ste 150, Kennewick, WA 99336

### PASCO OFFICE:

5710 Bedford St, Pasco, WA 99301

## Services & Features

- Multi-disciplinary teams, including therapists, psychiatric prescribers, behavioral interventionists, and case managers
- Culturally competent care tailored to meet the diverse cultural and linguistic needs of the youth we serve
- Case management, including coordination of services, resource connection, and ongoing support
- Individual, family, and group therapy
- Medication management and ongoing monitoring and education provided by licensed psychiatric prescribers

Partnering with youth,  
families, and communities  
for a stronger Tri-Cities



*Achieving health and wellness for families.*

# Our Programs

## Wraparound with Intensive Services (WISe)

WISe partners with youth and families to navigate complex mental and behavioral health challenges. Through team-based support, WISe builds skills, strengthens relationships, promotes wellness, and helps youth and families feel safer and more successful at home, in school, and in the community.



## SWIFT Crisis Stabilization

Stabilization and Wellness in Families Together (SWIFT) provides short-term, intensive support for youth experiencing a mental health crisis who are at risk of hurting themselves or others. SWIFT allows adolescents to seek the support they need while helping them stabilize and avoid hospitalization.



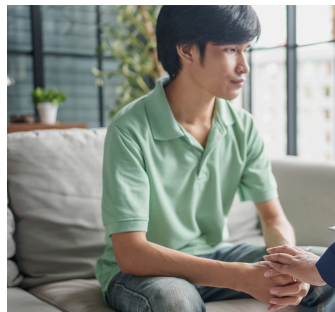
## Juvenile Justice Center

Our partnership with the Benton-Franklin Juvenile Justice Center provides mental health care for youth in detention, offering support to help youth process past trauma, manage mental health challenges, and develop the skills necessary for positive growth.



## Outpatient Mental Health

In addition to our WISe and SWIFT programs, Outpatient Mental Health (OPMH) is available as a less intensive option. The OPMH program empowers young people with the tools and skills to manage their mental health and navigate life's challenges.



## Mental Health First Aid Training

We proudly provide this community training to help individuals identify, understand, and respond to someone experiencing a mental health crisis.



## School-Based Mental Health

Local students have access to on-site counseling and crisis support through our SBMH program. In collaboration with school districts, we place mental health clinicians and case managers at multiple school buildings to break down barriers to care, reduce stigma, and ensure that students have the tools and resources they need to succeed both inside and outside the classroom.



## Barrier-Free Access

Getting help should never be complicated. At LCSNW, one referral connects you to the right care. Whether you're a parent, provider, or community partner, we'll guide you through the process and handle the details.