

2021 Report to the Community



LUTHERAN
**Community
Services**
NORTHWEST

A Century of Health, Justice and Hope
Est. 1921

100 years
of
Health.
Justice.
Hope.



"Inasmuch . . .

. . . as ye have done it unto one of the least of these my brethren, ye have done it unto ME." Matthew 25:40

VOL. XIV, NO. 1 JANUARY, 1959

ASSOCIATED LUTHERAN WELFARE SEATTLE 1, WASHINGTON



WHICH WAY?

This is a question we face from time to time, in moments of decision, or the crossroads of life. Sometimes it's hard for a young girl or a young boy, or a young couple to know. Sometimes we can help them to decide which way to turn, and help them start off in the right direction. This is one of the opportunities and responsibilities we have in our work through Associated Lutheran Welfare.

A New Year . . . looking forward . . . setting our sights . . . and moving ahead. A year in which to serve . . . to live resourcefully, daringly, unselfishly, valuably . . . to the benefit of our fellowmen . . . and to the glory of our God! This is the spirit of those whose interest, activity, and support make the services of Associated Lutheran Welfare a blessing to hundreds of children and families each year.



For Fiscal Year 2019-2020

LCS and Compass Sign Affiliation Agreement

It started as an idea five years ago: If Lutheran Community Services Northwest allied with Compass Housing Alliance, could we have a greater impact?

We know the real potential of the two organizations and the real needs in our communities. Over the last several years, we have defined LCS Northwest's strategy more and more in terms of impact. As a leading provider of services that focus on health, justice and hope, where should we invest in the future?

We are confident that the answer is in partnerships, and on Dec. 31, 2020, LCS Northwest and Compass signed a formal affiliation agreement. The two 100-year-old organizations, with Lutheran roots, are setting a course to help more people and strengthen more communities.

This is about broadening the conversations around the issue of homelessness with key supporters: donors, community leaders, service providers, politicians, boards and employees. Some people think our communities have lost control of the homeless situation. We prefer to take a strengths-based

position and envision what stable, affordable housing, coupled with health and human services, could do to build community.

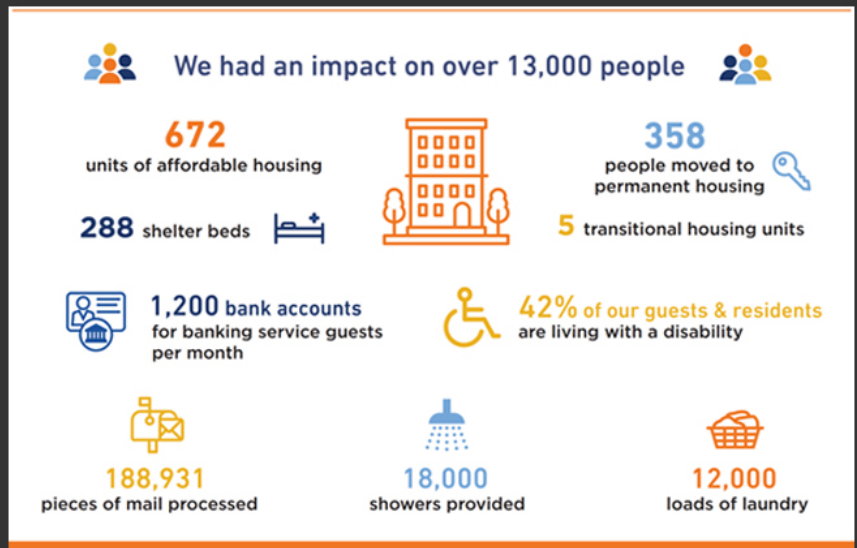
Through our affiliation with Compass, we will develop a deeper understanding of people experiencing homelessness. We will learn about the economics of supportive housing, how affordable housing works, and how the availability of LCS Northwest's services will help. It is not going to be easy, but we can have a greater impact on individuals, families, refugees, immigrants, seniors and veterans by combining the services they need with the housing options they deserve. Our affiliation with Compass will go a long way in meeting the two organizations' shared goal of bringing hope to more communities.

If you would like to help us improve the lives of hundreds of people living in our neighborhoods, consider making a [donation to LCS Northwest](#). You will not only help us expand our behavioral health services to those currently experiencing homelessness, you will also create opportunities to support individuals who have moved into permanent housing.



Getting to Know Compass

Compass Housing Alliance develops and provides essential services and affordable housing for low-income people and those experiencing homelessness in the greater Puget Sound region.



[Learn More](#)

www.compasshousingalliance.org

Taking on Challenges in Extraordinary Year

There is a great lesson about success and leadership to be learned from studying the way the buffalo uniquely responds to a storm. Instead of running away from the storm, a buffalo runs directly at it. By running through the storm, the buffalo minimizes the pain, time and frustration caused by a storm.

Last year, we faced the challenges generated by the COVID-19 pandemic and met them head on. Our doors closed for safety, but our dedicated team of employees made sure our services continued. Our work with behavioral health, child welfare, crime victims, seniors, refugees and immigrants kept going. Technology helped, as we deployed telehealth to connect with those we serve. We even expanded services to meet the basic human needs of people in crisis because it was the right thing to do.

As our communities, businesses and borders reopen, we anticipate an even greater need for our services. One way we are preparing to do more is by recognizing that people in the Northwest who experience housing instability or homelessness often have underlying conditions such as substance misuse, mental health issues and trauma. They would benefit from our services.

Last year, we announced the affiliation of Compass Housing Alliance and LCS Northwest. I am grateful for the rich conversations our two agencies are having about providing more supportive services along with more affordable housing and emergency shelter services. Knowing our new partner shares our mission, vision and values fills us with optimism and hope. It also gives our donors another reason to support LCS. Together, we will help people out of homelessness and have a far-reaching and much bigger positive impact on more lives.

Both LCS and Compass are celebrating 100 years of service this year. One key to the longevity of our two agencies is the ability to grow and meet the needs of people and communities. We continue to be inspired by our mission of partnering with people for health, justice and hope.

I want to thank our staff who live our mission every day and face challenges head on. I want to thank our donors and funders for their generosity and support. Our work in Washington, Oregon and Idaho would not be possible without you. Because of you, thousands of people enjoy better lives and communities grow stronger. This helps those communities weather any storm.

Blessings,
David



David Duea, President and CEO



Honoring Our Past

Let the Century Celebration begin, as Lutheran Community Services Northwest turns 100 years old in 2021. This milestone for our three-state agency comes as we continue to deal with the COVID-19 pandemic. Ironically, our beginning in 1921 came on the heels of the 1918-19 H1N1 flu pandemic.

Our human services agency in Oregon, Washington and Idaho is a combination of several Lutheran social outreach ministries known by different names. We come together under the unified mission to “partner with individuals, families and communities for health, justice and hope.” We serve tens of thousands of people through organic services that meet specific community needs.



A Century of Health, Justice and Hope
Est. 1921



1920s

Our agency began in 1921 as part of the Lutheran Compass Mission, serving “down-and-out” individuals and families in Tacoma, WA. A few years later, in 1926, concerned Lutherans in Portland, Oregon, came together to start a similar outreach effort, known as the Lutheran Welfare Association.

1930s

The onset of the Great Depression created significant human suffering and needs that Northwest Lutherans came together to address. The agency in Tacoma rented a farm to serve homeless and jobless men. In Portland, the agency provided clothing, bedding, food and rent assistance.

1940s

In 1944, Associated Lutheran Welfare, the third major component of our present agency, was formed in Washington State to address family and society disruptions caused by the Depression and



World War II. Early work included veterans services and professional casework for children living in two child-caring institutions in Everett and Poulsbo, WA. During the post-war years, many displaced Eastern European refugees were resettled through the efforts of our predecessor Lutheran agencies in both Portland and the Puget Sound area. Services for unwed mothers began in the late 1940s.

1950s and 60s

Social changes in the more affluent mid-century brought demands for new social services. Mental health, marriage and family counseling became areas of emphasis, as services for unwed mothers grew. The Spokane office opened in 1956 and the Tri-Cities office opened 1964.

1970s and 80s

We expanded with programs and opened new locations. Services for refugees and unaccompanied minors expanded in Portland and Seattle, senior services grew in Tacoma, and the Rape Crisis Center opened in Spokane. We opened offices and started offering services in Beaverton, McMinnville and Klamath Falls, Oregon, as well as in Bremerton, Washington.

1990s

We opened new offices in Astoria, Oregon, and Boise, Idaho. We added programs such as HopeSpring in Beaverton and Family Support Centers in Snohomish County, Washington.

2000s

In 2001, Lutheran Social Services of Washington and Idaho joined with Lutheran Family Service of Oregon and Southwest Washington to form Lutheran Community Services Northwest. Services for refugees and immigrants expanded in Seattle, Portland and McMinnville. Wraparound services for youth started in the Tri-Cities and then in Spokane, which also launched an Unaccompanied Minor Refugee program. Yamhill County grew into its own district while establishing A Family Place Relief Nursery.

We enter our second hundred years with an affiliation with Compass Housing Alliance. Our two organizations share Lutheran roots and legacies of service. We look forward to a partnership that will make our communities safer, healthier and more hopeful places to live.



URM Group Home Hit by Tree in Storm

Thankfully, nobody was injured.

A morning windstorm in Spokane last December blew over two trees that struck a group home which houses three youth in our Unaccompanied Refugee Minor (URM) program. One youth and one staff member were home.

“Had it happened a little earlier, there would have been two more kids at home,” said Shelly Hahn, Director of Child Welfare Services in Spokane. “The house is still being repaired, but thankfully, nobody was hurt.”

The two trees hit the house shortly after 7 a.m. Two kids had already left for school. The trees crashed through the living room, but one boy was in his bedroom while the staff member was in the kitchen.

Spokane

We subcontract with Helping Hands to operate and staff our URM group homes. By that evening, the three youth moved to a different home in Newman Lake. They stayed there for about two weeks before moving to a different house in Northwest Spokane that is on a bus line and closer to school.

“Our relationship with Helping Hands is stronger now because we learned we can trust them and they can trust us,” Shelly said. “They did a great job of finding housing immediately.”

Our URM work started five years ago in Spokane. We have been doing URM work in the Seattle area for four decades. URMs are youth who are escaping violence at home and immigrate to the U.S. They have no family here. We support URMs emotionally, physically and educationally as they work toward independence.

In Spokane, we have 38 URMs who live with foster parents or in group-home settings. Usually, the younger children live with families, while older youth live in group homes, semi-independently or independently. The kids must enter the URM system before they are 18, but can stay in it until they are 21 as they build independent living skills. They can access some program services and benefits past the age of 21 when participating in ongoing education or vocational training. Most of the kids have jobs once they are certified to work.

With a new administration, our URM work will likely increase. That will take more funding and staff, and more foster parents to build our communities.



Thankfully, nobody was hurt when a tree struck a group home during a December windstorm in Spokane. The three youth moved to a different house the same day.

Volunteers Help Relaunch Boise Services

All volunteers make a difference. Some are a necessity with certain human services.

Volunteers made it possible to relaunch our services in Idaho. As of April 1, 2021, LCS Northwest reestablished our Idaho services with the start of Safe Families for Children in Treasure Valley (Boise).

Idaho

Safe Families for Children in Treasure Valley is a child abuse prevention program that operates mostly through volunteers. Safe Families has 128 chapters nationally, including an established chapter in our Yamhill County District.

“Our entire team is really excited,” Idaho District Director Jessica Ruehrwein said prior to the launch. “We don’t know how extensive the needs are, but our families are stepping up to build a safety net for other families.”

Safe Families works to keep children safe and families together in times of crisis. It is a faith-based volunteer-dependent movement. Families host children and provide a network of support while parents in need are given the time to get back on their feet. In addition to Host Families, there are Family Friends and Family Coaches who connect parents to resources and offer guidance.

Our new Safe Families for Children chapter in Boise started April 1. Volunteer Host Families go through background checks and training before they can host children for families who are experiencing a crisis. Two program volunteers, Emily Erickson (left) and Sarah Gust, fingerprint potential Host Families.

All three roles are volunteers who come from participating churches. Volunteers receive training and Host Families must pass background checks. Safe Families is different from foster care because placing children into host homes is the sole discretion of the parents, Host families are not financially compensated and parents maintain full custody of their children.

So far, Jessica’s team has signed up four churches. Her team is also composed of volunteers and a Boise State University intern. Jessica is the lone paid employee.

“Our volunteers are the heart and soul of what we do,” she said. “I wouldn’t be able to do it without them.”

For the past year, Jessica’s team built the infrastructure behind Safe Families, including forging partnerships, managing risk, and working on legislation that supports Safe Families operating in Idaho. There are few services for families facing crisis in Idaho.

Safe Families of Treasure Valley Idaho had six Host Families approved at program launch. Jessica’s team will work to find operational funding and more volunteers.



Klamath Falls Relief Nursery Opens Despite Pandemic

In its first year, “A Family Gathering Place” Relief Nursery in Klamath Falls is improving the lives of young children and their families.

LCS Northwest led the effort to establish the Relief Nursery, which took six years of planning before the first class started in September of 2020. Many community partners make the nursery possible, especially Zion Lutheran Church, which donates space for the Relief Nursery.

“We are getting families stable enough so children can be successful in a traditional classroom setting,” said Relief Nursery Coordinator Amy Frey. “We’re positioning families so they can be sustainable and successful.”

Klamath Falls

Six families with 17 children who are ages four and five made up the first class. Because this Relief Nursery started in the pandemic, the staff worked with one family at a time, known as the respite model. Families would come to the nursery twice a week.

As of May 1, the Relief Nursery started using the standard therapeutic classroom model, where up to 11 families will have children meet as a class twice a week. Improving behavior is a major focus.

“We try to find out what triggers a child’s behavior, and we work to remove those triggers. They are usually related to some sort of trauma,” Amy said. “We work to calm the children down so we can start to connect with them.”

“ We are getting families stable enough so children can be successful in a traditional classroom setting. We’re positioning families so they can be sustainable and successful.”

- Amy Frey, Relief Nursery Coordinator, Klamath Falls



Members of our relief nursery team in Klamath Falls (from left) are: Mary Roberts, Amy Frey and Sierra Gallup. The nursery, A Family Gathering Place, opened last fall.

The feedback from the parents shows the Relief Nursery is making a difference. Here is an example:

“My son had terrible outbursts of anger and rage. Since attending the Relief Nursery program, he has learned to name his emotions and calm down, without an explosion,” states one participating parent. “This program has made our home life so much easier.”

In addition to the classroom for children, staff connects parents to services such as mental health counseling and substance use disorder treatment. The nursery also has a clothes closet and diaper bank for children.

“Whenever we have a need, such as clothes in a specific size, I put out an email to our partners, and that need is met the next day,” Amy said. “The support has been great.”

In September, A Family Gathering Place will add a second classroom for families with children 1.5 to 3 years old. The Relief Nursery team includes Lead Teacher Sierra Gallup and Assistant Teacher Mary Roberts.

LCS Northwest has an established, successful relief nursery program in Yamhill County known as “A Family Place.”

More Youth Getting Help in Tri-Cities

Our mental health work with youth and their families continues to grow in the Tri-Cities. Leading the growth is our Three Rivers Wraparound with Intensive Services (WISe) program.

Tri-Cities

From the beginning of April 2016, to the end of March 2017, we had 130 WISe clients in the Tri-Cities. By comparison, from the beginning of April 2020, to the end of March 2021, there were 381 unduplicated WISe clients.

“We have nearly tripled the number of youth we have served,” said District Director Sharon Gentry. “That’s strong growth, but we have more young people and families to reach in our area.”

WISe is a strengths-based program that is tailored to meet specific behavioral health needs of youth and their families. Each youth works with a WISe team that equips the youth’s family with skills to manage the stress and complexities of having a child with behavioral health challenges.

Part of the growth in WISe comes from expanded effort to reach out to the Latino community. More Spanish speakers have joined our Tri-Cities staff, increasing access to services. The client base is becoming more diverse as the Tri-Cities diversifies.

The Tri-Cities WISe team is anticipating an uptick in referrals now that schools are reopening and the pandemic is winding down.

“Once there are more eyes on kids, there are going to be referrals,” Sharon said. “Hopefully with more eyes on kids, the kids will be suffering less behind closed doors.”

At the end of March, there were already 60 children in the referral queue. The Tri-Cities team needs more staff to meet the increased demand. As an industry, human services lost employees during the pandemic.

“It’s not just us that are having trouble finding enough staff,” Gentry said. “The shortage is happening all over the state. I’m confident the workforce will pick back up.”

Three Rivers WISe (Tri-Cities)		
Year (April 1-March30)	2016-2017	2020-2021
Number of Youth Enrolled in WISe	130	381

Evaluation Network Improves Legal Outcomes for Asylum Seekers

Thousands of people seek asylum each year in the United States to escape torture and persecution in their homelands. Petitioning for asylum is a complex legal process. Having representation greatly improves the chances of an applicant being granted asylum.

North Puget Sound

This is where our Evaluation Network has an impact. A service housed under Refugees Northwest in North Puget Sound, the Evaluation Network provides pro-bono medical and psychological evaluations to asylum seekers primarily in King, Pierce and Snohomish Counties. Approximately 150 medical and health professionals volunteer their services in the network.

“Attorneys representing asylum seekers refer clients to us for evaluations,” Program Coordinator Maddie Ewbank

explained. “These examinations, documenting the physical and psychological evidence of human rights abuses, can be especially impactful evidence in immigration court.”

In 2019, the Evaluation Network expanded to serve survivors of human trafficking and other human rights abuses. Just as in asylum cases, referrals are accepted from attorneys working pro bono or low bono only. Network volunteers provided 129 psychological and 94 medical evaluations for 135 individuals that year. Even in the midst of a global pandemic, demand for services remained high. Network volunteers performed 68 medical and 90 psychological evaluations for 130 individuals in 2020.

The service provided by the volunteers is life-changing. Ninety-seven percent of the court decisions, which included an evaluation from our Network in 2019, granted asylum or other form of relief to the evaluation recipient.

LCS Northwest Leadership

Board of Director 2021

Chair: Roger Chase, Spokane, WA
Vice Chair: Greg Gilbert, Gig Harbor, WA
Secretary: Lisa Kraft, Eagle, ID
Laura Gifford, Portland, OR
Anna Meekisho, Beaverton, OR
Kim Nelson, Spokane Valley, WA
Barbara Smithson, Bremerton, WA
Amina Suchoski, Seattle, WA
Rev. Kirby Unti, Renton, WA
Rev. Mike Wilson, Prineville, OR

Special thanks to Les White and Mike Youngquist for serving on our Board of Directors.

Ex-Officio Board Members

Bishop Laurie Larson Caesar, Oregon Synod, ELCA
Bishop Richard Jaech, Southwestern WA Synod, ELCA
Bishop Kristen Kuempel, Northwest Intermountain Synod, ELCA
President Paul Linnemann, Northwest District, LCMS
Bishop Shelley Bryan Wee, Northwest WA Synod, ELCA

District Directors

Salah Ansary, Portland Area, OR & WA
Nora Foster, Klamath Falls, OR
Sharon Gentry, Tri-Cities, WA
Jay Kang, North Puget Sound, WA
Jordan Robinson, Yamhill County, OR
Jessica Ruehrwein, Treasure Valley, ID
Trudy Sorensen, South Puget Sound, WA
Erin Williams Hueter, Spokane, WA

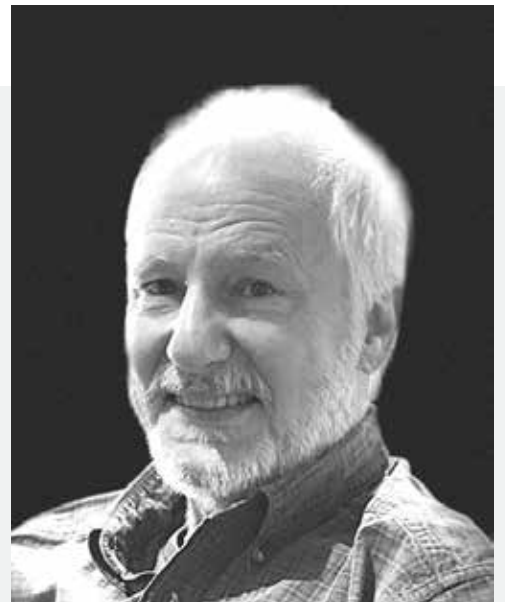
Shared Services

David Duea, President and CEO
Karyn Huffman, CFO
Heike Lake, COO
Elliot Stockstad, CDO
Mollie Bond, Director of Development Operations
Amy Converse, Director of Organizational Excellence
Steve Haviland, Director of Communications
Susan Polon, Director of Accounting Operations
Eric Ryan, Director of Information Technology

Pickel Ends Long Klamath Run

Thank you, Bob Pickel, for building community! After 25 years of leading our work in Klamath Falls, Bob Pickel finished his career with LCS Northwest in April.

Bob started working for LCS in January of 1996 with a "handful" of part-time staff in a small three-bedroom house. Today, the Klamath office is home to more than 30 employees who provide a number of community-based behavioral health-related services.



LCS Northwest Annual Report 2021

Lutheran Community Services Northwest Consolidated Financial Statements Review

July 1, 2019 - June 30, 2020
(sourced from audited financial statements)

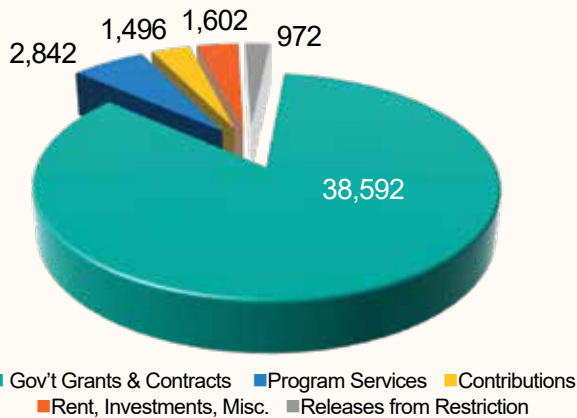
Revenue

General: Consolidated financial results reflect a positive net margin of \$4.1M. We are profoundly grateful for our funding partners, donors and foundations. Through professional investment management, our investments provided 4% of our total revenue.

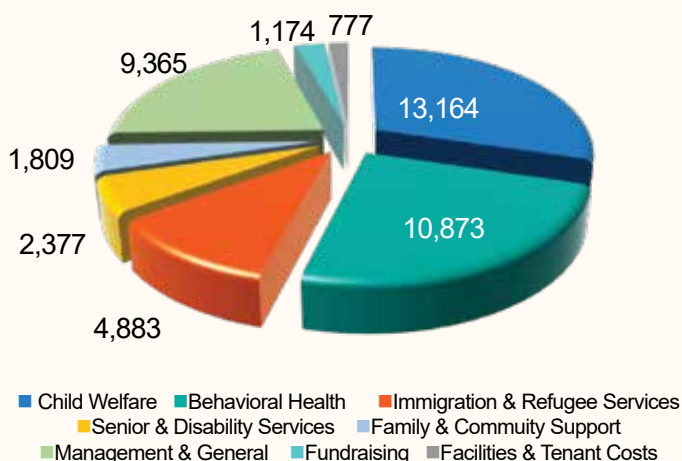
Contribution Revenue: Contributions in the current year and restricted contributions from past years provided 6% of total revenue. Contributions supported our services across the organization with capital funding raised to support costs from COVID-19 and direct support to clients. You generously provided nearly \$400,000 of capital and operating funds to open a new center for early childhood intervention in Willamina, OR.

Contract and Program Services Revenue: We treasure our relationships with state, local, and federal agencies who provide funding for services to the most vulnerable. Funding from these agencies provided 85% of our total revenue in FY 19/20.

Revenues by Funding Source (in \$1,000s)



Expenses by Program (in \$1,000s)



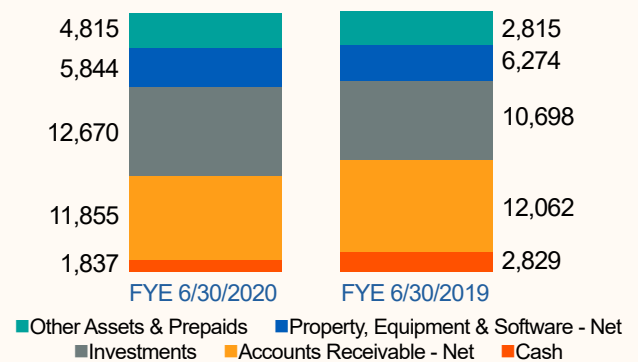
Expenditures

Programs: We spend 70% of total costs to pay agency staff to serve clients and our communities. Direct support of clients was 13% of total program expenses. Our two largest lines of service, which represent 72% of our total expenses, are child welfare (wraparound and early childhood preventative services) and behavioral health. About 15% of our expenses supported services to people who are refugees and immigrants. Management and General, which supports all programs, is 28% of total program costs.

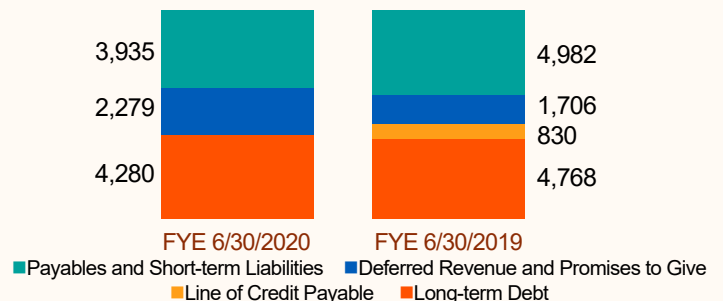
Balance Sheet

Our liquidity position is sufficient to support programs and operations along with servicing debt. Our net assets increased \$4.1M due to an operating surplus, investment income, and increases in restricted funds.

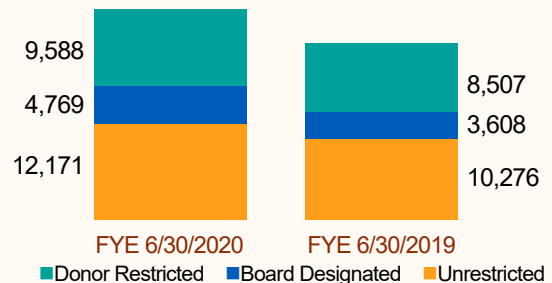
Assets (in \$1,000s)



Liabilities (in \$1,000s)



Net Assets (in \$1,000s)



Virtual Art Class Brings Purpose to People Living With Dementia

Art can help people living with dementia express their thoughts, memories and emotions. It's why LCS Northwest introduced Opening Minds Through Art (OMA) as part of our Dementia Friendly Pierce County initiative.

OMA is an award-winning, evidence-based, intergenerational art program for people with Alzheimer's and other forms of dementia. The curriculum was developed by Scripps Gerontology Center at Miami (OH) University. The center certified LCS Northwest as an OMA provider in the fall of 2020.

South Puget Sound

Classes are typically conducted in a classroom setting but, because of the pandemic, we have been offering them via Zoom. Class leaders Laurie Arndt and Maria Holt do a no-contact delivery of art supplies to students in advance of the session.

The team has offered three six-week sessions so far. Each class begins with a song, then Laurie guides the students through creating an art piece.

Dick, who lives with dementia, is enrolled in OMA. Bernie, his wife and caregiver, participates as well.

"Dick really likes having something to look forward to," Bernie explains. "He can't do some things, but he can do this."

One of the beauties of OMA is that participants can be like Dick, who has no background in art. He was a wastewater engineer. "I've always built things," he said, "but I've never painted before; never taken any art class."

You'd never guess it looking at Dick's vibrant paintings hanging in their kitchen. Beautiful swaths of color dancing over the canvas like light through a prism. Poignant compositions that are ripe with intent and meaning.

"Laurie and Maria make it really easy," Dick says, humbly. Bernie smiles, nods her head. "They're really great teachers," she adds.



Opening Minds Through Art (OMA) helps people living with dementia express themselves through art. One of the OMA participants, Dick, shows off his artwork.

"Although the art making classes are online, the artists and the care partner volunteers still enjoy the social aspect of the program," Dementia Services Program Director Maria Holt notes. "They recognize each other on the screen and they interact with one another. They offer feedback and compliments on the artwork of others."

Future plans are to increase to two sessions each week by adding a second group of participants, and utilizing a hybrid model with in-person OMA as soon as it is safe to do so.

Meet Tom Bratvold, LCS Northwest Donor

Tom Bratvold's story with LCS Northwest began before he was born.

After a difficult pregnancy with their second child, doctors told Tom's parents that they wouldn't be able to have any more children. As hardworking and devoted parents, they raised their two children and sent them to elementary school before Tom's mother returned to her job as a schoolteacher.

In the late 1960s, Tom's parents felt a strong call to grow their family, so they looked into adoption.

"It was the tie through their church and their faith that brought them to Lutheran Community Services to try to find a child," Tom said. "And in 1968, they adopted me out of Seattle."

Family Legacy

Tom reflects fondly on his childhood, recalling how his parents' appreciated LCS Northwest for helping them grow their family. It inspired them to raise their children with a spirit of generosity.

"Lutheran Community Services was always a big part of my mother's appreciation," he said. "The Lutheran faith was a big part of my childhood, and it was important for my parents for their whole lives."

After their children grew into adults, Tom's parents retired and moved to Coeur d'Alene, Idaho, where they became deeply involved with LCS Northwest's Spokane office. They attended the Chocolate & Champagne Gala and eagerly followed the work LCS Northwest was doing to serve Spokane-area families.

To show their appreciation for the agency's role in their family, they decided to pay it forward by investing in a child therapy room in memory of Tom's late paternal grandmother. But when Tom's mother passed away, they wanted to double their impact on the next generation.

"Lutheran Community Services meant so much to my mom and to our family," Tom said. "I think in her mind, giving was paying it back, but in the process of paying it back and showing her appreciation and thankfulness, it really became paying it forward for the next generations -- in parent counseling, in child therapy, in counseling or in trying to hold a family network together that may be in crisis or trouble. Family was everything to my mom."

Tom is deeply thankful for the role LCS Northwest has played in his family's story.

"It's humbling that the agency brought me to my family," he said. "I certainly was blessed in the home that I ended up in, and LCS Northwest was the facilitator that connected an infant in need of a family with parents who wanted to grow theirs."



Tom Bratvold is the youngest member of his Spokane family, and was adopted by his parents through LCS Northwest in 1968. Tom continues his family's tradition of supporting the work of LCS Northwest.

Yamhill Team Provides Basics in Pandemic

The COVID-19 Pandemic has been hard on many, but for some, it has caused dire hardship. Some families struggled to obtain life's necessities.

When the first lockdown order came from the Oregon governor last spring, our Yamhill County team of staff and volunteers responded to need. They delivered food, critical services and basic items to stabilize families.

“Our staff and volunteers did a great job quickly responding to changes and demand caused by the pandemic,” said District Director Jordan Robinson. “I was inspired to see this group adapting to changes and meeting the needs of our families.”

Yamhill County

Some of the ways our Yamhill County team responded to the pandemic included:

- Met a spike of 230 percent in diaper bank usage during the pandemic. The already popular diaper banks, a part of A Family Place Relief Nurseries in Newberg, McMinnville and Willamina, switched from in-building to drive-through pick up that improved safety.
- Delivered emergency food of 200 meals and food boxes weekly to high stress families struggling with food insecurity.
- Stayed connected to families by introducing virtual home visits, along with dropping family enrichment boxes off on doorsteps.

Throughout the pandemic, our Yamhill County staff continues to step up and provide essential services such as mental health and immigration counseling. Not all services work well in

a virtual space, but a few improved. All parent education classes will now be virtual because participation increased during the pandemic.

The work by the team of staff and volunteers in the last year will also continue after the pandemic.

“Moving forward, we’ll continue to help families meet food and nutritional needs,” Jordan said. “This experience reinforced the importance of strong community relationships so we can meet the needs of vulnerable families..”



Strengthening Refugee and Immigrant Families

Even in favorable conditions, parenting is difficult. For refugee and immigrant families, stress from adapting to a new culture and unresolved complex trauma pose additional challenges.

Our new Parenting in Portland (PIP) program highlights the remarkable strengths and resilience that families demonstrate while facing adversity.

Portland Area

“We understand and value the positive adaptation in the face of significant adversity as the central point of collaboration with families. We work with the entire family on prevention and early interventions,” said Assefash Melles, who manages PIP. “We’re strengthening the family while building resiliency. We create cultural and language specific therapeutic support to children and families to address their trauma.”

PIP launched in 2020 when LCS Northwest received a 3-year \$736,000 grant from the City of Portland’s Children’s Levy. The 3-person PIP team includes two case managers, Rebecca Miller, and Jean-Claude Nsengiyunva, who speaks five languages. Launched in a pandemic, the team decided to forge ahead virtually.

“We just dove in and did it,” Assefash said. The team exceeded target by serving more than 35 families, including over 90 children. Currently, 18 families are on a waiting list. The team works with single moms and dads along with

dual-parent families mostly from the Democratic Republic of Congo, Sudan, Eritrea, Iraq and refugees from the Rohingya and Burmese community.

“It’s a very diverse community, which makes us look at parenting in different ways,” Assefash said. One constant is honoring the cultural and traditions of each family. The team is mindful not to impose outsider approaches of parenting and child development.

PIP offers one-on-one child and family mentoring. A partnering organization, The Refugee Care Collective, provides mentors to adults and children. Those relationships last beyond a family’s work in PIP.

“The personal connections are just amazing, especially with the youth,” Assefash said.

Isolation has been a problem for families during COVID. Assefash said they have planned several group sessions in larger community spaces where they can meet with families, yet safely distance. Her team is having important conversations about accurate COVID-19 vaccination information so participants can make their own informed decisions in consultations with their primary care providers.

Some of PIP’s biggest advocates are parents who have benefited from the program. Some of those parents are going through our Peer Support training, and volunteer within their communities. They often refer other families to PIP.

“We’re strengthening the family while building resiliency. We create cultural and language specific therapeutic support to children and families to address their trauma.”

**- Assefash Melles
Parenting in Portland Manager
Portland, OR**



Our President's Circle members are esteemed friends of LCS Northwest who provide a strong financial foundation and support thousands of families in Washington, Oregon and Idaho each year. In commemoration of our Centennial year and in order to position ourselves to continue performing vital work in Northwest communities for our next 100 years, we elevated our President's Circle to annual giving of \$1,500 or more began in January of 2021. Future editions of our Annual Report will not list these names.



Platinum President's Circle

(Giving of more than \$10,000)

- Gustav & Janice Diem
- John & Mary Douglas
- Robert William Muenschert†
- Paula Fendler
- Nancy Fleet Stark
- Mark & Tracie Henninger
- Kathleen & Thomas Jacobson
- Hal & Nancy Johnson
- Christine M. & Peter† Koch
- Norbert & Christine Leupold
- Margaret Liebert
- Ben & Annie McCracken†
- Mark & Katie Newman
- Duane Ulleland
- Dean & Jenny Winter

Diamond President's Circle

(Giving of \$7,500 - \$9,999)

- Ladd Bjorneby
- Jeannette Ham
- Roger Rystrom
- Mr. & Mrs. Bruce Vesper

Gold President's Circle

(Giving of \$5,000 - \$7,499)

- Trygve & Lyla Anderson
- Roger & Kathleen Chase
- David & Jane Duea
- Brian & Judy Elbert
- Curtis & Mary Froscheiser
- Michelle Giguere
- Paul Gilbert
- Eli Hastings
- Joan Hosking & Ralph Schoolcraft
- Loni Lynn Parrish
- Jeffrey & Mary Smith

Silver President's Circle

(Giving of \$3,500 - \$4,999)

- Robert & Janet Asbridge
- Grethe Barber
- Mr. & Mrs. Dan Bauermeister
- Richard J Baumann
- Nicholas Bohlinger
- Phillip & Stephanie Brandt
- Owen Bratvold
- Tamara Brining
- Ed & Jan Bryan
- Aimee Chase
- Robert & Carolyn Cornie
- Philip & Beth Cornish
- Ted & Tammie Crawford
- Peter DiCampo
- Wanda Kay & Clinton Dirks†
- Kathy George
- John & Katie Gienapp
- Cathy & David Haugeberg
- Larry & Dorothy Hayden
- Joby Herman
- Rick & Kathleen John
- Katherine Johnson
- Mark & Ann Kachmarek
- Denise A La Rue
- Arthur & Julie Landskov
- David & Melissa Martenson
- Debbie Mattison
- Gordon & Donna Merseth
- Gretta Merwin
- Arnold & Mina Mittelstaedt
- Jan Moorefield
- Roberta Nestaas
- Martin Nygaard
- John & Stephanie Parker
- John & Cathy Pederson
- John & Debbie Pitney
- Bryan & Sarita Preuss
- Edward C Rankin

- Kale Rogers
- Jan Sander
- Don Schneuker
- Patrick & Marie Storm
- Thomas & Janet Tankersley
- Katherine & Michael Tatro
- Roger Thieme
- Larry & Phyllis Vachal
- Elisa (Mo) VanDerPuy
- Bruce Waltz & Ann Stevenson
- Paul & Boots Winterstein
- Richard & Gayle Withnell

Pewter President's Circle

(Giving of \$2,500 - \$3,499)

- John Aakre & Cindy Michael
- Julie Adelman
- Josh & Emma Anway
- Steve & Sally Bailey
- Katherine Beeler
- Jerry & Barbara Belvill
- Carol Coye Benson
- Carolee Berntsen
- Molly & Curt Beyer
- Geoff Bjorkedal
- Terry & Margie Bonk
- Mike & Gretchen Boock
- Davida & Richard Brown
- William & Kathryn Brueggemann

† Deceased

Neal & Tiina Buckaloo
 Janette Buell
 Scott & Susan Chambers
 Carla & Nate Chambers
 Kevin Chambers
 Don & Elsie Clements
 Kevin Corcoran
 Mr. & Mrs. Dennis J. Crisman
 Marcy & Wayne Daley
 Jacqueline E. Darroch
 Julie Davis
 Edward & Cynthia DeLano
 Ligeia & Zach DeVleming
 Joni Dirks & John Ransom
 Dwight & Susan Dively
 Josie Dobrinski
 Bill & Ann Dolan
 Loren & Chris Dudley
 Cynthia & Terry Edwards
 Bruce & Eileen Edwards
 Pauline Ellett†
 Judith Emblar
 Brian & Jacqueline Eriksen
 Daniel & Karen Erlander
 Jerry & Lore Ethridge
 Gerry & Linda Evanson
 Eugene & Margrethe Farnstrom
 Roberta Greenwood
 Kevin &Carolynn Harding
 Jack Hatlen
 Andy & Terri Heckroth
 Jason & Tiffany Henness
 Arnie Hollander & Susan Watkins
 Mark & Ane Hornibrook
 Karyn & William Huffman
 Mitzi Hunter
 Melanie C. Johnson
 Martha & David Jones
 David & Theresa Kappus
 Doug Kelley
 Larry Kiewert
 Anna Kotelnikova
 Mr. & Mrs. Todd Kraft
 Paul & Joan Kushner
 Heike Lake & Skip Frazier
 Mickey Lansing-Luehrs & Dean Luehrs

Kenneth & Elaine LaToza
 Fred & Catherine Lauritsen
 Dick & Avona Lehmann
 Dave Lehto
 Rodrigo Lopez
 Dan & Judy Lorenz
 Cynthia Lorenzen
 Eric & Jan Luttrell
 Rich & Candy Mathes
 Malcolm & Diane McCallum
 Seamus McCarthy
 Kathleen McCrossin
 Dennis (Denny) & Liz McGaughey
 Jim & Marilyn McGinnis
 John & Cindy McKay
 Stephen Meagher
 Anna & Lemmy Meekisho
 Richard Middleton
 Homer & Yvonne Midtlyng
 The Miller Family
 Matt & Kari Misterek
 Jennifer Monteleone
 Gary & Kristen Moore
 Clay & Kimberly Nelson
 Mike & Deb Nelson
 Yen Nguyen
 Mr. & Mrs. Dave Olsen
 Ashley Parrish & Alexander Mitchell
 Thomas & Chelsea Paterson
 Marian Pearson†
 David Perlman
 Carolyn Petersen
 Daniel & Barbara Peterson
 Donald A. Peterson
 The Ramey Family
 Mr. & Mrs. Stephen Recher
 Steven Reinisch
 Alexander & Joanne Rekow
 Tessie Riddell
 Marcia Riggers
 Mr. & Mrs. Gerald L. Ritter
 Kari Roberts
 Kenneth & Sandy Robinson
 Jordan Robinson & Megan McCrossin
 Gilbert & Beth Rossing
 Steven Rupp
 Bill & Jacqueline Sachse

Susan Sager
 Craig Schoof
 Laura Schroeder
 Timothy & Sarah Schwering
 Berniece Severson
 Brian & Dianne Shea
 Julie & David Siepmann
 The Smith & Cahlander Family
 Dorothy Marie & BJ Smith
 Mateusz Stankiewicz
 Kathryn & Gary Stevenson
 Elliot & Jennifer Stockstad
 Mr. & Mrs. Jeff Stout
 Paul & Debi Stromberg
 Ken Tesch
 Thomas Tesmer
 Doris Towery
 Cliff Tvedten
 Allen & Sally Vraspir
 Susan L. Wanwig
 David & Mary Weil
 Bob & Lindie Wightman
 Kara & Chris Wilson
 Robert & Cynthia Winchell
 Wade & Sue Wipperling
 David & Audrey Witsoe
 Ronald & Stacie Wolfe

President's Circle
 (Giving of \$1,500 - \$2,499)
 Margaret & Clint Albaugh
 Bill & Ruth Anderson
 Bruce & Dixie Arneklev
 Brett Baker
 Bob & Jan Becker
 Richard Benson
 Bryan & Margaret Bowyer
 Ethel H. Brende
 Benjamin Calvert
 Carrie Culley
 Tamara & Keith Duyck
 Anne Ellett
 Shannon Eoff
 Mr. & Mrs. John P. Fabian

Andrew Fall
 Mr. & Mrs. William Frier
 J. James & Margel Gallagher
 Carol & Charles Geldaker
 David & Sue Gitch
 Mike & Jeanie Gougler
 Gary & Sharon Greenwood
 Chris & Karen Grigg
 Mr. & Mrs. Bill Gustafson
 Carl Gustafson
 Woody & Donna Harris
 Virginia Hilken
 Dennis Hill
 Ricky & Dale Jamtgaard
 The Johnson Family
 Katherine Knorr
 David & Nancy Leaf
 Roberta Leonardy
 David Leverenz
 Marilyn Love
 Jack & Gloria Lyon
 Paul Matthias
 Mr. & Mrs. Randy Mills
 Mike Morris
 Steven & Jan Oliva
 Frank & Carolyn Payne
 William & Suzanne Phillips
 Suzanne Poppema & John Cramer
 Jason & Alicia Raam
 Gregory & Lucinda Saue
 Dan & Judy Selmann
 Rebecca & Ray Shjerven
 Marian & Michael Soderberg
 Les Toth
 Howard & Jackie Tribbett
 Kirby (Brian) & Kim Unti
 Doug & Susan Walton
 Walter & Julie Want
 Rodney Wegener
 Patricia & Dean Werth
 Dick & Norma Wiser

“Whatever you do for one of the least of these, you do for me.” Matthew 25:40
Members of our 25:40 Club give \$300-\$999 annually to create Health, Justice and Hope. In honor of our Centennial year and in consideration of the work we will continue to do over our next 100 years, the Matthew 25:40 club annual giving will be elevated to \$500-\$1,199 beginning July 1, 2022. Future editions of our Annual Report will not list these names.

Ryan Adams	Ruth Briehl	Denice & Calvin Davis	Jessica George	Sharon Hickman
David Adelsheim	Darlene & James Brittner	Yvonne Davis	Kate & Steve Gerken	Jennifer Hickman
Robert Allen	Harold & Judith Britton	Christopher DeLorto	Bev Gibson	Karen Hicks
Joel Allen	Maureen Brown	Mary Denny & Van Hutton	Geoffrey & Laura Jane Gifford	Dan Hinmon
Mary & Bob Anderson	Loren & Myrle Bruner	Don & Sandra Denoff	Lawrence & Janice Gockel	Lorna Hodgkin
Clarice Anderson	Mr. & Mrs. Robert Bryce	Kim Depew	Mr. & Mrs. Art Goldgrabe	Mark Hoelter
Arnold & Sandra Anderson	Clinton A Buetow	Matt & Brielle Deppe	Edward & Candace Gormley	Scott Holcom
Joan Anderson	Ian & Lauren Burch	Mark & Nancy Dickman	Lewis & Kay Goslin	Mark Holder & Lauren Murphy-Holder
David & DeRonah Anderson	Susan & Red (Brian) Burchfield	Roger & Denise Diehl	Stan & Darby Gott	Elise Yarnell Hollamon
Robert & Lu Ann Anderson	Paula & Corey Burchill	Herman Diers	Francis & Sue Gregory	Anne & Whitney Holmer
James & Mary	Tracie Burger	Mr. & Mrs. Richard E. Ding	Jean Gresham	C. Steven & Joyce Holzhey
Angelosante	Elaine & Scott Burke	Jonathan DiPiero	Stuart Gunness & Susan Brandt	Mr. & Mrs. Ken Hoopingarner
Salah Ansary	Tane & Angie Cabe	Cassidy Doohan	Elizabeth Hack	Kathleen Horgan & Bruce Dickman
Carl Aplin	Gary & Kathryn Cabe	Morgan Doughty	Paul & Patricia Haddeland	William House
Alfredo & Laurine Apolloni	Bonnie & Mark Calhoun	Peter J Douglass	Fred Hagelstein	Don & Maria Hudock
Vern & Reba Arneson	Dana Carelle	Steve & Maria Duea	Kelly Hagglund	Kathy & Dale Hulings
Robert & Barbara Atkinson	Eva Carey	Sally Duenow	Silas & Amy Halloran-Steiner	Mr. & Mrs. Russell Hulvey
Ken & Celia Austin	Charles J Carlson	Chloe Dugger	Evan & Brandy Halprin	Dr. Martha Ice †
Joi Bailey	Rodney H Carlson	John & Imelda Dulcich	Susan Halverson-	Mr. & Mrs. Carl Imhoff
Holly Bamford Hunt	Michael & Amy Caruso	Kayse Durgan	Westerberg & Jim Westerberg	Kurt Imhoff
Tom Barnes & Lisa Ramsey	Sunisa Chanyaputhipong & Chien-Hung Lai	Matthew Eagan	Bill Hamann	Bonnie Ingham
Elaine Barsotti	David & Marcia Chapman	Dennis & Gretchen Eaker	Jack & Susan Hammond	Keri Isbister
Kira & David Barsotti	Mary Charvat	Llewellyn Edming	Michael & Laura Hampton	Ajay Iselin
Mert & Winnie Barth	Andrew & Rebecca Cheek	Bob & Karen Edwards	David & Barbara Hamry	Nancy Jacobson
Robert & Debby Beck	Lisa Cherian	Keith & Virginia Eilers	David & Joanne Hansen	Jim & Tai James
Dr. John Beck	Angela Chien	Donald & Paula Eismann	Hazel Hanson	Inga Jennings
Mr. & Mrs. Ed Beck	Jesse Christopherson	Arthur & Katherine Ellickson	Ruth Hanson	Brian & Sunshine John
Tonia Beebe	Margaret Clark	Terry Emery	Louise & Joe Harless	Jeff A Johnson
Charma Belle	Jesse Christopherson	Jeff Ennis	Dorothy Haskell	Dean & LaVonne Johnson
Thomas & Elizabeth Beller	Lawrence Clay	Margaret Ensor	David & Mary Haugen	Mr. & Mrs. Erv Johnson
Patti Berg & Dick Thiel	Richard & Mary Coar	Ermias & Amy Ephrem	Stephen Haviland & Curtis Ma	John & Corky Johnson
Kathleen Bernards	Seth Cohen	John & Jana Eriks	Cheryl Heath	Carolyn & Douglas Johnson
Dione Bishop	Michelle Colvin	Dan & Sharon Fako	Patricia Heath	Erin & Jamie Johnson
Rene & Michael Bittle	Moon Compton	Mark & Heidi Fowle	Vickie Heath	Jon & Vicki Johnson
Mark & Sally Bjerke	George Converse	Amanda Franklin	James & Sue (Carol) Heiden	Liz & Greg Jones
Seanna & Kell Bodholt	Heath & Katherine Cornick	Sidney Friedman & Marilyn Walster	Courtney Hein	Drs. Jones & Nicotri
Mollie Bond	Brady & Dorothy Coy	Wendy & Darren Fry	Kristi Heiser	Pastor Julie Josund & Mr. Patrick Brady
Don Borjesson	Michelle Crawley-Withee	Jim & Nancy Fuerstenberg	Tamara Herdener	Pat & Paul Kaald
Joseph & Helen Breed	Emily Cruickshank	Phyllia Gabel	Carrol Hernandez	Kasimir & Barbara Kachmarek
Glyn & Sharon Brice	Joyce Cutler	John & Marcia Garrick		Jane Kangas
Sarah Briehl & Ron Morris	Garrick Dabbs	Emily Garrick-Steenson		
	Mark & Christine Danielsen	Dennis & Sue Garrood		
	Maila Davenport	Zack & Samantha Geary		
	John Davidson	Gary & Kathryn Gemar		

† Deceased

Helen Kaupanger	John & Kimberly Martinez	Ross & Marcia Perkins	Tom & Rosalie Schwartz	Szambelan
Susan Kavanaugh & Glenn Blackmon	Marilyn Martinyak	Kaitlin Petersen	Susan Schwartz	Tamra Taylor
Connie & Stu Keebaugh	Aimee & Joshua Maurer	Luann Petersen	John & Linda Schwichtenberg	Mike & Peggy Taylor
Eugenia Keegan	Megan McAlister	Jon & Claudia Peterson	Elaine Scott	Paul & Elin Teyler
Karen & Larry Keller	Andrea McEvoy	Greg & Sandy Peterson	Rochelle & Warren Seaholm	Dennis Thomas & Tiffany Nguyen
John & Gail Kelly	Dee & Mary McGonigle	Wendi Pfannenstiel	Merrill & Carol Severson	Amy Thompson
Tiffany & Nicholas Kelly	Louise McGrody	Esther Pickard	Julie Sheasby	Katharine Tibbitts
Craig Kenworthy & Karen Larsen	Morgen McLaughlin	Holle & Carol Plaehn	Joseph & Becky Sherman	Richard & Sandra Tietjen
Philip & Joan Kercher	Ronald & Carol Means	Carolyn Poirier	Dianne Shiner	Faatau Togia & Shirley Ray-Togia
Darlene Kerwin & Anne Wagner	Shosh (Sharon) Meyer	Brandon Porter	Danny Sikkens	Judy & Robert Travers
Michael & Constance Keyes	Alan & Roberta Meyers	Danika Porter	Kendrick & Patricia Simila	James & Mary Jo Tyler
Saraswati Kibit	Mr. & Mrs. Brian D. Milbrath	John & Edie Pyle	Mr. & Mrs. Fredric A. Simonen	Kathy Valach
Patricia Killen	Richard & Mary Miller	Julie Quesada	Helen & James Skindlov	Julie Van Devender
The Kindem Family	Diane & Dennis Miller	Tim & Letitia Quigley	Carol Smith	Mike & Raegan Vaughn
Mark Kloehn & Nicole Gemmill	Marianne Mills	Betty & Jack Quinn	Debbie Smith	Richard & Babetta Velategui
Rev. & Mrs. Lowell Knutson	Marc & Jenny Mims	Doria Rabe	Courtney Smith	Henry & Diane Verdoorn
Karyn Kostyk	Elizabeth Moe	Tamera & Chuck Rabura	Barbara Smithson	Christine Vernier
David & Pamela Krautscheid	Mr. & Mrs. Bob Moffitt	Jozanne Rabyor	Neal & Judy Snider	Marie Vicksta
Clarie Kuball	Flora Momtazi	Wayne W Rall	Milton Snyder	Harold & Shirley Vlist
Mr. & Mrs. James Kullnat	Moe Momtazi	David & Linda Rasmussen	Mr. & Mrs. Henry Solbrack	Ray & Judy Voeller
Jennifer & Sandeep Kumar	Tahmiene Momtazi	Ove & Barbara Rasmussen	Trudy Sorensen & Mark Lorenzen	Elaine Von Wald
Janet Labes	Clifford & Laura Monroe	Scott & Bonnie Rehn	Ramona M. Soule	Jean M. Walsh
Tony Lai	Aaron Morelli	Marie Reitz	Karrie Spencer	Edward Wanner
Lenore LamBeau	Melissa Morgan	Roberta Remlick-Taylor	Doug & Carol Spruance	Ruth Warbington
Jon & Ursula Lanam	Mr. & Mrs. Rusty Morse	Rick & Sharon Reuter	Laura Spurrell	Heidi Wasch
Cynthia Lantry	Becky Mortensen	Tara Rich	Sarah Staples-Kelley	John Watson
Dean & Wendy Largent	Robert & Karin Moshier	Larry & Marty Richards	Wayne Stebner	Donald & Linda Watson
Charlene & Ronald Larsen	John Mostrom & Cathy Woods	Judith Ann Richardson	Eric & Kimberly Steffen	Leslie & Don Watts
Esther Larsen	Denise Mutschler	Michael Richmond	Paul Steger & Patricia Ferguson-Steger	Joann Weaver
Richard & Sharon Larson	Pamela J Nagel	Jennifer & Ron Richter	Jackie Stenger	John & Jacqueline Wecker
Paige Lawson	J. Edward & Catherine Nelson	Michael & Sally Ritchie	Lisa Stephens	Mrs. Herbert L. Werner
Marceline (Marcie) Lazzari	Michael & Roxanne Nelson	Sherill Roberts	Richard Stephens	Ric & Judy Wesselman
Dorothy Lee	Mark Nelson	James & Cheryl Robinson	Herb & Ruth Stephens	Ronald & Carol (Joy) Wesselman
Jim Leistikow & Rev. Jan Nesse	Mark & Terrie (Teresa) Nelson	Leo & Larayne Rowland	Robert Stephenson	David & Nancy Wheeler
Rhonda Levitt	Barbara Nelson	Tamara Rowland	Mr. & Mrs. Evan L. Stoll	Joanie Wheeler
Dennis & Heather Lewis	James E Newman	Mr. & Mrs. Fred Rupp	Kristen & Francisco Stoller	Neal Whitlock
John B. Lidstrom	Barb & Denny Newton	Trudy & Butch Rux	Thomas & Windi Struck	Karen Whitmore
Craig & Shelly Likkell	Robert & Sharon Nichols	Sam & Lauren Rynearson	Paul & Laurie Stumme-Diers	Wilkinson Family
Christina Lindell	Mr. & Mrs. Lynn K. Nordby	Jessica Sacher	Kathleen & Larry Sunderland	Investments
Roger & Sandy Lizut	Philip & Helen Nordquist	Renee Saint-Amour	Richard Stephens	David & Lee Williams
William Locke	Jennifer & Jeffrey Nyburg	Eric Salinas	Robert Stephenson	Frank & Lydia Wise
Cheryl & Stephen Lucky	Gerardo Ochoa	Mike & Susan Sanborn	Mr. & Mrs. Evan L. Stoll	David Wold
Darrel & Joanne Lundby	Charles & Bonnie Oliver	Bob & Debbie Sanders	Kristen & Francisco Stoller	Joe & Sherry Wonderlick
Gloria Lutz	Roselyn Olson	DeMar & Patricia Sather	Thomas & Windi Struck	Amber Wood
Shannon Mack	Dennis & Marilyn Olson	Roger & Carol Scheurer	Paul & Laurie Stumme-Diers	Beverly & Scott Wood
Scott & Mary Sue Macy	Beth Orling & Bob Zimmermann	Roger & Carol Scheurer	David & Barbara Swartling	Andrew J Yee
Steven & Jacelaine Macy	Travis Osborne	Roger & Carol Scheurer	Rodney & Evelyn Swenson	Steven Zimmerman
Casey & Karen Manfrin	Catherine C. O'Toole	Jaime Schilling	Jeremy Swindle	Ginny Zimmerman
Jean Manwaring	Richard Page & Erica Marksburly	Julie Schisel	Marc & Beth Swiontkowski	Mac Zumhoff
Evan Martin	Dina Pappas	Gerald & Maralee Schmidt	Karen & Gordon Sykes	Donald & Barbara Zurstadt
	Mr. & Mrs. Paul Parkin	Martin & Christine Schmidt	Michelle (Dimond)	
	Judith Pauwels	Bob & Ruth Schmidt		
	Carol Pera	Jacob & Valeria Schmitt		
		Mike & Brenda Schrage		
		Richard & Barbara Schroeder		
		Paul Schumacher		

Congregations and Church Organizations

Our ministry is made possible by congregations and church organizations across Washington, Oregon and Idaho through social outreach funding, benevolence support, special offerings and in-kind support. These are the congregations and church organizations that gave \$300 or more from July 2019 to June 2020. Future editions of our Annual Report will not list these names.

CONGREGATIONS

Advent Lutheran Church, Spokane Valley, WA
Amazing Grace Lutheran Church, Seattle, WA
American Lutheran Church, Newport, WA
Augustana Lutheran Church, Portland, OR
Bethany Lutheran Church, Bainbridge Island, WA
Bethesda Lutheran Church, Mountlake Terrace, WA
Bethlehem Lutheran Church, Kennewick, WA
Calvary Chappel Hillside, Spokane, WA
Camano Lutheran Church, Camano Island, WA
Celebration Lutheran Church, Puyallup, WA
Central Lutheran Church, Portland, OR
Central Lutheran Church, Spokane, WA
Christ Lutheran Church, Odessa, WA
Christ Lutheran Church, Lakewood, WA
Columbia Community Church, Richland, WA
Creator Lutheran Church Foundation, Bonney Lake, WA
Denny Park Lutheran Church, Seattle, WA
Dungeness Valley Lutheran Church, Sequim, WA
Edmonds Lutheran Church, Edmonds, WA
Emanuel Lutheran Church, Ritzville, WA
First Lutheran Church, Kennewick, WA
First Lutheran Church of Bothell, Bothell, WA
First Lutheran Church of Richmond Beach, Shoreline, WA
First Presbyterian Church, McMinnville, OR
Grace and Mercy Lutheran Church, Hermiston, OR
Grace Lutheran Church, Bellevue, WA
Holy Cross Lutheran Church, Spokane, WA
Holy Spirit Lutheran Church, Kirkland, WA
Holy Trinity Lutheran Church, Port Angeles, WA
Immanuel Lutheran Church, Seattle, WA
Immanuel Lutheran Church, Silverton, OR
Kent Lutheran Church, Kent, WA
King of Glory Lutheran Church, Boise, ID
Living Savior Lutheran Church, Tualatin, OR
Lord of Life Lutheran Church, Kennewick, WA
Luther Memorial Lutheran Church, Seattle, WA
Lutheran Church of Christ the King, Tacoma, WA
Lutheran Church of the Good Shepherd, Seattle, WA
Lutheran Church of the Master, Coeur D'Alene, ID
Magnolia Lutheran Church, Seattle, WA
Mountain View Lutheran Church, Edgewood, WA
Our Savior Lutheran Church, Pinehurst, ID
Our Saviour's Lutheran Church, Bremerton, WA
Our Saviour's Lutheran Church, Arlington, WA
Peace Evangelical Lutheran Church, Tacoma, WA
Peace Lutheran Church, Silvana, WA
Peace Lutheran Church, Seattle, WA
Peace Lutheran Church, Salem, OR
Peace Lutheran Church, Colfax, WA

Phinney Ridge Lutheran Church, Seattle, WA
Pilgrim Lutheran Church, Puyallup, WA
Poulsbo First Lutheran Church, Poulsbo, WA
Prince of Peace Lutheran Church, Shoreline, WA
Prince of Peace Lutheran Church, Spokane, WA
Prince of Peace Women of E.L.C.A., Spokane, WA
Queen Anne Lutheran Church, Seattle, WA
Redeemer Lutheran Church, Fircrest, WA
Saint Andrew's Lutheran Church, Bellevue, WA
Silverdale Lutheran Church, Silverdale, WA
St. James Lutheran Church, Portland, OR
St. John United Lutheran Church, Seattle, WA
St. John's Lutheran Church, Medical Lake, WA
St. Joseph Catholic Church, Vancouver, WA
St. Luke Lutheran Church, Spokane, WA
St. Luke Parish, Seattle, WA
St. Mark Lutheran Church, Salem, OR
St. Mark's Lutheran Church, Spokane, WA
St. Mark's Lutheran Church By the Narrows, Tacoma, WA
St. Matthew's Lutheran Church, Renton, WA
The Church of Jesus Christ of Latter-Day Saints, Salt Lake City, UT
Trinity Lutheran Church, Freeland, WA
Trinity Lutheran Church, Sheridan, OR
Troy Lutheran Church, Troy, ID
Unitarian Universalist Fellowship, McMinnville, OR
University Lutheran Church, Seattle, WA
Vinland Lutheran Church, Poulsbo, WA
Wilbur Lutheran Church Endowment Fund, Wilbur, WA
Zion Lutheran Church, Kent, WA
Zoar Evangelical Lutheran Church, Canby, OR

CHURCH ORGANIZATIONS

Cameron WELCA, Kendrick, ID
Christian & Missionary Alliance, Arlington, WA
Diakonia Guild Cheney, Cheney, WA
Evangelical Lutheran Church In America, Chicago, IL
First Presbyterian Church Deacon's Fund, Newberg, OR
Lutheran Church Missouri Synod - Northwest District, Portland, OR
Northwest Intermountain Synod, ELCA, Spokane, WA
Northwest WA SWO, Bellingham, WA
Northwest Washington Synod, ELCA, Seattle, WA
Oregon Synod, ELCA, Portland, OR
Oregon Synod, Region 1 ELCA, Mill Creek, WA
Pasco First Lutheran Church Women, Pasco, WA
Peace Lutheran Church Women, Portland, OR
Presbyterian Women, McMinnville, OR
Sisters of Providence, Spokane, WA
Southwestern Washington Synod, ELCA, Tacoma, WA
WELCA - First Lutheran Church, Saint Helens, OR
Women of the ELCA St. John's Lutheran Church, Medical Lake, WA

In Honor of

The Centennial Circle helps us collectively celebrate an important and rare milestone while also providing the capacity to chart the future of health and human services in communities across the Northwest. Members of our Centennial Circle make a monthly gift of \$100 in honor of our 100 years of services. While these names are not printed in our Annual Report, members of our Centennial Circle have special access to limited edition LCS Northwest pieces and digital items like Spotify playlists and Facebook frames. To learn more, visit lcsnw.org/centennial.

Honor / Donor

Rick Barger
LCS Finance Department

Wayne Beebe
Craig Beebe

Ladd Bjorneby
Lutheran Church of the Master

Jennifer Brown
Anonymous

Mania Butler
St. Matthew Lutheran Church

Jolie Bwiza
Elliot & Jennifer Stockstad

Linda Chu
The Bethany Birthday Bunch at Bethany Lutheran Church

Yamhill Community Care
Word's Out PR

Jane Doe (The woman who was attacked near the Downriver Disc Golf Course on 4/20/20)
Katie McCaffery & female runners of Spokane

David Duea & Peter Harris
Woody & Donna Harris

Bruce & Eileen Edwards
Richard & Sandra Tietjen

Your Great ESL Teachers
Keith Walters & Jonathan Tamez

Jordan Gabilondo & Restorative Justice Program
PDX
Laura Spurrell

Geoff & Laura Gifford
Rhett & Julie Luedtke

Beverly Gilman
Greta Gilman

Norene Goplen
Lewis & Sue Van Winkle

Glenna Green
Richard Green

The Helpers
Robert & Lu Ann Anderson

Elizabeth Henderson
Barbara Allen

Kristen Imhoff
Anonymous

Cooper Jones
Martha & David Jones
Varian Medical Systems

Grace Kellogg on her 100th Birthday 2019
Karyn & William Huffman

Lisa Lavier
Kahlia Sullen & Norwex

LCS Management & staff at all levels & locations, especially Sharon, Matthew, Ron, and all my wonderful co-workers in our Kennewick Office
Laura Dahmen

Assefash Melles
Cheryl Coon

Pastor Tyrus Miles
Richard Pabst

Kristina Olson
Anonymous

Stephanie Parker
John Parker

Jaime Schilling
Trygve & Lyla Anderson

Cappy Spruance
Laurel Spruance

Ann Stevenson
Alan Waltz

Jaime Schilling & Elliot Stockstad
John Aakre & Cindy Michael

Elliot Stockstad
Anne & Whitney Holmer

Omar Stuenkel
Mr. & Mrs. Omar T. Stuenkel

Tim Swiontkowski
Marc & Beth Swiontkowski

Allison Tibbitts
Katharine Tibbitts

Herb & Blanche VanDorn
Donald & Suzanne Kaster

Tina Yoder
Carrie Palmore

SIP
Shannon Flory



Jay Kang joined LCS Northwest in 2020 as the District Director of our North Puget Sound region. Jay previously worked for the Korean Women's Association.

Businesses, Foundations and Organizations

LCS Northwest is grateful to the many donors who have given throughout the decades to bring Health, Justice and Hope to our communities. We also recognize that our online format and current culture raises many privacy concerns for those who give to LCS Northwest. Therefore, future issues of our annual report will not include donor names. If you would like to share your concerns about your name not being printed, please email development@lcsnw.org and we will get in touch with you to hear more. *Future editions of our Annual Report will not list these names.*

BUSINESSES

A-1 TV & Electronics Service Co. Inc., Vancouver, WA
Advanced Foot & Ankle Clinic, Kennewick, WA
Advanced Orthopedic Physical Therapy, P.C., Newberg, OR
Alaska Airlines, Seattle, WA
ALSC Architects, Spokane, WA
Amerigroup Corporation, Spokane, WA
Applied Physics Technologies, Inc., McMinnville, OR
Art Elements Gallery, Newberg, OR
Austin Industries LLC, Newberg, OR
Bethel Heights Vineyard, Inc., Salem, OR
Boyes Janitorial, Inc., Newberg, OR
Brick House Wine Company, Newberg, OR
Broadway Group, Spokane, WA
Brown, Tarlow, Bridges & Palmer P.C., Newberg, OR
Cameron Winery, Dundee, OR
Children's Medical Clinic of Newberg, Newberg, OR
Chimacum Woods, Port Ludlow, WA
CK Investment Group, Snohomish, WA
Coastal Community Bank, Everett, WA
Cortner Architectural Company, Spokane, WA
Dayton Dahlias, Dayton, OR
E*Trade Securities LLC, Jersey City, NJ
Edward Jones, Saint Louis, MO
Ellingsen Paxton Orthodontics, Spokane Valley, WA
Ericksons Thriftway, Prineville, OR
Ernst Irrigation, Saint Paul, OR
ETS Laboratories, Saint Helena, CA
Exit Real Estate, Spokane, WA
Eyes For Life, P.S., Spokane, WA
First Community Credit Union, Coquille, OR
First Federal Savings & Loan, McMinnville, OR
First Interstate Bank, Spokane, WA
Friendsview Retirement Community, Newberg, OR
Fueled By Change LLC, Camas, WA
Gunness Landscaping, McMinnville, OR
Hagan Hamilton Insurance, McMinnville, OR
Hampton Lumber, Portland, OR
Heritage Bank, Olympia, WA
Homestreet Bank, Spokane, WA
Hughes Physical Therapy, Kennewick, WA
Inland Group, Spokane, WA
Kaiser Permanente, Renton, WA
Kroger / Fred Meyer, Cincinnati, OH
Lithia Auto Stores, Kennewick, WA

Maysara Winery, LLC, McMinnville, OR
Microsoft Matching Gifts Program, Princeton, NJ
Molina Healthcare of Washington, Inc., Bothell, WA
Monrovia Nursery Company, Azusa, CA
Newberg Family Chiropractic, P.C., Newberg, OR
Nike Matching Gift Program, Princeton, NJ
North by Northwest Relays, Wasilla, AK
Northern Quest Resort, Airway Heights, WA
Numerica Credit Union, Spokane Valley, WA
Open Sky Law, Kent, WA
Oregon Massage Clinic, LLC, Newberg, OR
Oregon Wine Country Properties LLC, Newberg, OR
Pillar To Post, Spokane, WA
Ponzi Vineyards, Sherwood, OR
Randall | Danskin, P.S., Spokane, WA
Ransom Spirits, LLC, Sheridan, OR
S&S Coatings, Spokane, WA
SRM Development, Spokane, WA
Tacoma Lutheran Retirement Community, Tacoma, WA
TerraView NW Consulting Engineers, Arlington, WA
The Eyrie Vineyards, Dundee, OR
The Standard Employee Giving Campaign, Princeton, NJ
Vanguard Charitable, Warwick, RI
Varian Medical Systems, Princeton, NJ
Vasquez-Cooper Associates, McMinnville, OR
Walters & Wolf Curtain Wall, Mukilteo, WA
Washington Roofing Company, McMinnville, OR
Washington Trust Bank, Spokane, WA
Wendle Motors, Spokane, WA
Wine By Joe, LLC, Dundee, OR

FOUNDATIONS

The Albert Haller Foundation, Sequim, WA
Austin Family Foundation, Newberg, OR
Bank of America Charitable Gift Fund, Boston, MA
Ben B. Cheney Foundation, Tacoma, WA
Benson Family Foundation, Portland, OR
Big Lots Foundation, Columbus, OH
Bill & Melinda Gates Foundation, Seattle, WA
The Brainerd Foundation, Seattle, WA
The Carson Family Charitable Fund of InFaith, Minneapolis, MN
Children's Trust Fund of Oregon Foundation, Portland, OR
Community Foundation for Southwest Washington, Vancouver, WA
Community Foundation of Snohomish County, Everett, WA
Coon Family Foundation, Portland, OR

Businesses, Foundations and Organizations

Didier Holley Fund of OCF, Portland, OR
Echo Bay Foundation, Bellevue, WA
EverTrust Foundation, Everett, WA
Gienapp Family Foundation, Seattle, WA
George & Dorothy Gies Family Foundation, Odessa, WA
Greater Tacoma Community Foundation, Tacoma, WA
InFaith Community Foundation, Minneapolis, MN
Innovia Foundation, Spokane, WA
Intel Foundation, Hillsboro, OR
Johansen Family Foundation, Henderson, NV
John and Ginger Niemeyer Foundation, Portland, OR
June & Julian Foss Foundation, Portland, OR
The Knoke Fund of InFaith Community Foundation, Minneapolis, MN
M.J. Murdock Charitable Trust, Vancouver, WA
McMinnville Area Community Foundation, McMinnville, OR
McMinnville Kiwanis Foundation, McMinnville, OR
Multicare Foundation, Tacoma, WA
OCF Joseph E. Weston Public Foundation, Portland, OR
OneFamily Foundation, Seattle, WA
Oregon AILA Foundation, Portland, OR
Our Savior's Lutheran Church Foundation, Lake Oswego, OR
Port Angeles Education Foundation, Port Angeles, WA
S.I. Jaggar Blount Fund of OCF, Portland, OR
Samuel S. Johnson Foundation, Salem, OR
SBW Foundation, Middletown, CT
Schamp Family Fund of OCF, Portland, OR
Schwab Charitable Fund, San Francisco, CA
Seattle Foundation, Seattle, WA
Seattle Rotary Service Foundation, Seattle, WA
Sequoia Foundation, Tacoma, WA
Sheng-Yen Lu Foundation, Redmond, WA
Spirit Mountain Community Fund, Grand Ronde, OR
Stevenson Family Trust, McMinnville, OR
TEGNA Foundation, Mc Lean, VA
The Bamford Foundation, Tacoma, WA
The Ford Family Foundation, Roseburg, OR
The Oregon Community Foundation, Portland, OR
Walmart Foundation, Bentonville, AR
Wells Fargo Foundation, Minneapolis, MN
Whisper Foundation, Tacoma, WA
William A. Looney Family Foundation, Tacoma, WA
William and Donna Irgens Charitable Family Fund, Minneapolis, MN
William O. Murphy Foundation, Spokane, WA
Windermere Foundation, Seattle, WA
Windows of Hope Foundation, Tacoma, WA
Woodrow Foundation, Spokane, WA
Woodward Family Foundation, Danville, CA

NON-PROFIT ORGANIZATIONS

Employees Community Fund of Boeing, Princeton, NJ
Exchange Club of Highline, Burien, WA
Heads Up Tri-Cities, Pasco, WA
Health Care Providers Council, University Place, WA
Intel Volunteer Grant Program, Princeton, NJ
Kiwanis Foundation of Port Angeles, Port Angeles, WA
Newberg Charitable Organization, Newberg, OR

Performing Company Booster Club, Newberg, OR
Providence Health & Services - Oregon, Seattle, WA
Refugee Care Collective Northwest, Portland, OR
Safe Families for Children Alliance, McMinnville, OR
Sisters of Providence, Renton, WA
St. Paul Rodeo Association, Saint Paul, OR
Stanford University, Palo Alto, CA
T. Rowe Price Program for Charitable Giving, Baltimore, MD
TIAA Charitable, Indianapolis, IN
United Way of Benton & Franklin Counties, Kennewick, WA
United Way of Clallam County, Port Angeles, WA
United Way of Columbia-Willamette, Portland, OR
United Way of East Central IA, Cedar Rapids, IA
United Way of Greater PA & S. NJ, Philadelphia, PA
United Way of Spokane County, Spokane, WA
Wells Fargo Community Support Campaign, Saint Paul, MN
Yamhill Community Care Organization, McMinnville, OR

Lockbox, our secure donation processing system, is a way for us to continue to provide great services while being more conscious of the cost and your time. Lockbox maximizes the impact your generosity has on your community by delivering your donation directly to the bank, rather than the lengthy process used in the past. The only change is the address to which you'll mail your donation: **LCSNW - Donations Lockbox #1034, PO Box 35146, Seattle, WA 98124-5146**. Rest assured that even though the address is Seattle, your donation will go directly where you intend it as long as you make a note in the memo line of your check. Contact development@lcsnw.org with any questions.

Recurring Donations: Nonprofits face many challenges these days, and LCS Northwest is not immune to those challenges. One of the greatest barriers to serving our community with excellence is consistent revenue. **You can be part of the solution!** By selecting "recurring" on any of our donation pages, you can "set it and forget it" when it comes to regular giving to LCS Northwest. Rest assured each donation will be used in the manner you select in your first donation. Give today by visiting lcsnw.org/donate and click on "donate securely online" to choose this option.

Circle of Hope

The Circle of Hope recognizes those who have chosen to leave a lasting legacy of Health, Justice and Hope in our community by making a planned gift to LCS Northwest or the LCS Foundation.

Please note that in future editions of this report names of deceased Circle of Hope donors will not be printed. These names will be honored on a special webpage and will be viewable via a link on our homepage at lcsnw.org in August.

Bill & Ruth Anderson
 Grieg † & Clarice Anderson
 Tressia & Henry † Anderson
 Mieke Appel †
 Nicole Aquilar
 Rev. Wayne & Jackie Bacus
 Alma Bakshas †
 Karen Bates
 Peter & Lydia Beckman †
 Ron & Evalena Berg
 Howard Bernsten †
 Ladd Bjorneby
 Marla Blaser
 Lori Bonkoski
 Arthur & Berniece Bowers †
 Lawrence & Marian Brammer
 Georgia M. Brandt †
 Ruth Briehl
 Lori Broucker & David Knapp
 Ernest & Ebba Brown †
 Virginia Buchfinck
 Gary and Connie Burchill
 Bruce & Ardis Burrington †
 Chris & Earl Cammock †
 Janice Campbell
 Tonya Campion
 John Canwell
 Delores Carstensen †
 Roger & Kathy Chase
 Anita Cheadle †
 Katherine Chew †
 Donald & Shirley Clark †
 Daniel & Erica Clark
 Margaret Clark
 Kathleen J. Clayton †
 Sonja Coffman
 Wayne & Marcy Daley
 Alice Danielson †
 Don & Sandra Denoff
 Harold Dale DeWitz †
 Mark & Nancy Dickman
 Wanda Kay & Clinton Dirks †
 Mark & Kay Doolittle

David & Ruth Droegemueller
 David & Jane Duea
 Sally & John † Duenow
 Linda Dunlap
 Dwight & Frances Edwins †
 Rev. Art & Kathy Ellickson
 John & Ruth Fabian
 Kim & Kais Faddah
 Dan & Sharon Fako
 Paula Fendler
 Arnie & Marylin Fichtenberg
 Bernard J. Fichtenberg
 Rudy & Polly Fichtenberg
 Alan Riendeau &
 Margie Fiedler
 Mark Filler
 Vera Fink
 Annie & Bob † Fortnum
 Grant & Helen Framstad †
 Gertrude Volke
 Dorothy A. Ganzer †
 Carol Gerdts †
 John & Katie Gienapp
 Jim & Georgia Girvan
 Larry & Nancy
 Goodenough †
 Clement Gornall †
 Richard & Carol Greenup
 Fred & Hilda † Hagelstein
 Jeannette Ham
 Bill Hamann
 Larry & Dorothy Hayden
 Barry & Sharon Hazard
 Ralph & Gail Hendrickson
 Shirley S. Henry †
 J.D. & Alaina Henry
 Mary Herod
 William Hershey &
 Sarah Schwartz
 Derek & Heather Hill
 Ronald D. & Rita K. Hills
 Gail Hills
 Mark & Miriam † Hoelter

Gilbert Holland †
 Pamela Holsinger-Fuchs &
 Thomas Fuchs
 Kathryn Horton †
 Lloyd Chester Howell †
 Lois Huseby
 Jack & Helen Hustad
 Dr. Martha Ice †
 Marilyn & Jim † Iverson
 Rev. Harlow &
 Nancy Jacobson
 Doris James †
 Frank & Sandra † Jennings
 Carl Johnson †
 Larry & Louise Johnson
 Patrick Brady & Julie Josund
 Marjory Kallem †
 Rienhold & Lois † Kassner
 Vern & Beverly Kautenberger
 Christine M. & Peter † Koch
 Jean Krone †
 Ardell E. Kuchenbecker †
 Gladys Kumnick †
 Jon & Ursula Lanam
 David & Nancy Leaf
 Ken & Margaret Leaf
 Jim Leistikow &
 Rev. Jan Nesse
 Donald † &
 Roberta Leonardy
 Sally Jean Leuer
 Darrel & Joanne Lundby
 Leonard & Carleen Lust
 Grace Lynch †
 Diane Malone
 Patricia Manning †
 David & Melissa Martenson
 Bill & Lois Mathews
 Paul & Dixie † Matthias
 Edward & Winifred May †
 Malcolm & Diane McCallum
 Rev. Ron & Karen McCallum
 Lynda & Doug † McDowell

Jim & Marilyn McGinnis
 Sheryl McGrath
 Tim & Tami McHugh
 Christie McKee
 Gordon & Donna Merseth
 William & Lynn Meyer
 Janice Moorefield
 Dr. Martin Mueller
 Darwin Mueller
 Ethyl Mae Nelson
 Phil & Ellen † Nelson
 Phil & Becky Nelson
 Barbara Jo Nelson
 Roberta Nestaas
 Philip & Helen Nordquist
 Anita Olendorph †
 Gary & Shirley Olin
 Paul & Megan Olson
 Rev. Randall & Janice Olson
 Nathan & Elisabeth Page
 Gay Paschoal
 Beverly Patterson
 Ellen R. Paulson †
 Allan & Jane Paulson
 Barbara Pearson †
 Marian Pearson †
 Rev. Clemens † &
 Carol Pera
 Lenore Peterson
 Willis & Gail Peterson
 Janet Radford
 Robi Railey
 Jeanne Rehwinkel
 Ardis Reitan-Nutley †
 Vilene Ringhand †
 Louise Robertson Hills †
 Richard & Elaine Rodning
 Lois & James † Rolfe
 George & Avis Rowbotham
 Louise Rudy †
 Robin Russell
 Beatrice Scheele †
 Hannah & Chester † Schink

Donald &
 Margaret † Schneuker
 Rev. Richard &
 Dorothy Scholz †
 Laura Schroeder
 Kenneth & Karla Scott
 Alice Shannon †
 Brian & Dianne Shea
 Dianne Shiner &
 David Sellers
 Ed & Judy Simonen †
 Fred & Chris Simonen
 Hall & Bettie Simons †
 Helene H. Soehnlein †
 Alma Sorenson †
 Randal & Lin Southam
 Rev. Ruben &
 Olive Spannaus †
 Jackie Stenger
 Neal & Annette Stixrud
 Rev. Norris Stoa †
 Betty Strong †
 Edward & Cynthia Sudol
 Rev. Paul & Mary Swanson
 David & Barbara Swartling
 Nicolyn Thiot
 Ruth Truitt †
 Cliff & Ronni † Tvedten
 Theda Tyler †
 Phyllis Ufer †
 Rev. Duane Ulleland
 Larry & Phyllis Vachal
 Viola M. Van Gilder
 Alex & Louise VanderWilde †
 Al & Sally Vraspir
 Steven & Donna Warner
 Bill & Carol Warren
 Rodney Wegener
 Paul & Boots Winterstein
 Wade & Sue Wipperling
 Helen Woodbury †
 Dwight & Lee † Zulauf
 † Deceased



In Memory / Donor

Jeremiah Allestad
Mary & Theodore Allestad

Richard & Wilma Backstrom
Employees Community
Fund of Boeing
Jeanette Backstrom

Gail A. Bohannon
Anonymous
Diane Hallberg
Steve & Laurie Howe
Karol Hughes
Christopher Lind
Julie Lindmark
Minnesota Boychoir
David & Mary Jo Nelson
Karen Reynolds
Alan Walter
Christopher Westermeyer

Mary Booher
Anonymous

Mary Brandt
Phillip & Stephanie Brandt

Bodil Bratvold
Owen Bratvold

Bryan Joe Brown
Randi Biedscheid

Leslie Buckaloo
Susan Almeida
Judith Anderson
Rebecca Berg
Bonnie Bollman
Neal & Tiina Buckaloo
Roger & Kathleen Chase
Evelyn Creager
Lea Ehrlich
Joyce Flanigan
Susan Goodrich &
Gordon Sylte
Marilyn & Tom Harris
Jan Herman
Jaak Juhkentaal
Penny Neste
Jerilyn Powers
Carol Terry
Elaine Tyrle

Nancy Carlson
Charles J Carlson

Zach Crisman
Mr. & Mrs. Dennis J. Crisman

Eleanor Cruickshank
Emily Cruickshank

My Mother Darlyce
Sigi & David Helgeson

Bob Duea
P. Michael & Marilyn Carlson
Marilyn Duea
Anna Eissfeldt
Lord of Life Lutheran Church
Nancy & David Olson

Joan Egnor
Kathleen Bernards

F Pauline Ellett
Anonymous
Anonymous
Anne Ellett

Barbara May Fairbanks
Dan & Melanie North

Luther C. Fendler
Bruce P Edens

Melvin Foster
Marlys Foster

Effie Frick
Charlene & Clark Kagele

Clara Gilliland
James Gilliland

Betty Glazier
Gene Glazier

Carol Goldman
Louise McGrody

Jeff Embler & Donna Grady
Thomas & Katie Petke

Jim Grant
Diakonia Guild Cheney

Mary Anna Gunness
John & Margaret Asmussen
Scott & Nancy Larsen
Steven & Jacelaine Macy
Jay & Marsha Paterson
Donald Stow &
Edith Rissberger
William Van Amburg
Larry & Jane Anne Warren

Gene & Beverley Hagen
Thomas & Mari Hagen

Joyce Hahn
Anonymous

Ted Ham
Jeannette Ham

Elna Haynes
Kacey Jones
Mark Norelius
Kristine Norelius

Wanda Kay Dirks Hill
Jacqueline Dirks
Dennis Hill

Cory Darwin Jones
Michael Mabrito & Amy Peck

Wayne & Grace Kellogg
Karyn & William Huffman

Papa, Kevin, Mason & Emmy
Greg & Mary Gilbert

David Killen
Patricia Killen

Angel Lio Low
Benson Low

Eric Maraby
Lynda Maraby

Lynn Mathews
Bill & Lois Mathews

Lois Irene McCall
Jaime Schilling

Doug McDowell
Lynda McDowell

Doyle & Kathy McKee-Martin
Christie McKee

Hal Meili
Diakonia Guild Cheney

Marian Lee Mueller
Brad & Nancy Horton

Charles Mutschler
Denise Mutschler

Louis Nelson
PEO, Chapter FH

Rosalyn Anna Nelson
Martha Goolsby

Alice Niemeier
Sandra & David Sauer

Ginny Ofelt
James Ofelt

Marian Pearson
Susan Fine
Fred Herrlinger
M. Kathryn Swanson

Rev. Clemens Pera
Mary Anne & Scott deVry

Matthias James Ripley
Mary Jo & H.M. Hernandez

Dorathy Roseleip
Dave & Janice Roseleip

James Schmidt
Nancy & John Hodge

Daphne Schneider
Mary Compton
Heltzel Williams, PC
Dennis Schneider
Curtis J Schneider

Meredith Scott
Roberta Nestaas

Dennis L. Sherman
Mr. & Mrs. Carl Imhoff

Our Son, Bill
Bill & Ruth Anderson

Christine Soule
Dave & Darby Quay-Cornell

Norma Spoonemore
Mark & Virginia Rowley

Maureen Stebner
Kris Higgins
Wayne Stebner

Linda Stephenson
Ronald Baker &
Lacy Macy-Baker
Nicholas & D. Lynne
Barbatsis
Steve & Kathleen Bernards
Rene & Michael Bittle

Nancy Brik
Jan Coleman
Jane & Doug Davis
J. Nicholas & Jane Fax
Francine Fiore
Diane Flansburg
Edward & Candace Gormley
Donald & Linda Hevener
Jayne & Douglas Hurl
Calvin & Deborah Kearns
Michael & Constance Keyes
Allan Larsen
Richard & Ann Lee
Robert & Donna Lunt
Scott & Mary Sue Macy
Steven & Jacelaine Macy
Glen & Kelleen Macy
Michael & Christy McCoy
Luella McKenzie
Gene & Kellie Menke
Steve Mikami
The Miller Family
Brittany Olsen
John Roberts
Donald & Judy Rutschman
Yvette Saarinen
Donald Stow &
Edith Rissberger
Carl & Leslie Thompson
Dan & Ginny Upton
Lee Vasquez
Elsie Williams

Stephanie Tesch
Ken Tesch

Florence Ulgenes
Emily Ulgenes

Edixon Velazquez
Camilla Koon

Nelson Wong
Christina Wong &
John Morrison

Nora Foster is our new District Director in charge of Klamath Falls. She replaced Bob Pickel in April 2021 after serving as the Associate District Director for the last four years.



Our Mission

Lutheran Community Services Northwest partners with individuals, families and communities for health, justice and hope.

lcsnw.org



To learn more about our work, click the location below.

[Oregon](#)

[Astoria](#)

[Beaverton](#)

[Klamath Falls](#)

[Portland](#)

[Salem](#)

[Yamhill](#)

[Washington](#)

[Bremerton](#)

[Kennewick](#)

[North Puget Sound](#)

[Spokane](#)

[Tacoma](#)

[Vancouver](#)

[Idaho](#)

[Boise](#)

Shared Services
4040 S 188th Street,
Suite 300
SeaTac, WA 98188-5070
(206) 901-1685



LCS Northwest services are provided without regard to race, ethnicity, national origin, religious belief, gender, gender identity or expression, sexual orientation, age, marital status, ability, military or veteran status, source of income or political affiliation.

